

**JAMES MONROE ELEMENTARY SCHOOL
NEW CONSTRUCTION IN LIEU OF MODERNIZATION
AT VIEW RIDGE ELEMENTARY SCHOOL**

RESOLUTION NO. 983

A RESOLUTION certifying that portions of the existing facilities identified in the project application (Form D-3) submitted to the Office of Superintendent of Public Instruction on November 5, 2009 will be surplus and replaced in lieu of modernization of existing facilities and that those portions of the existing facilities will not be used in the future for instructional purposes or be eligible for future state financial assistance.

WHEREAS, the Everett School District has undertaken a project to expand and modernize James Monroe Elementary School; and

WHEREAS, both local and state funds will be used for this project; and

WHEREAS, there are laws and rules regarding District eligibility for state assistance; and;

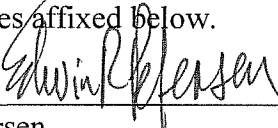
WHEREAS, it is required that the District certify per WAC 392-347-042 that the existing facility or space to be replaced will not be used for instructional purposes after the modernization of View Ridge Elementary is completed, and that the facility or space will be ineligible for any future financial assistance; and

WHEREAS, the modernizations of James Monroe and View Ridge Elementary Schools are both funded as part of the 2006 Capital Improvement Bond;

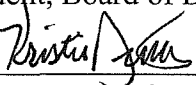
THEREFORE, BE IT RESOLVED that the Everett School District hereby removes 10,124 s.f. of View Ridge Elementary School for instructional use to be replaced with 10,124 s.f. of new instructional space at James Monroe Elementary School.

~~ADOPTED this _____ of _____, 2010, and authenticated by the signatures affixed below.~~

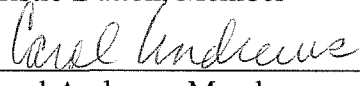
ADOPTED this 23 day of February, 2010, and authenticated by the signatures affixed below.



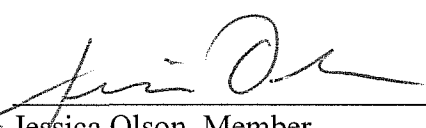
Ed Petersen
President, Board of Directors



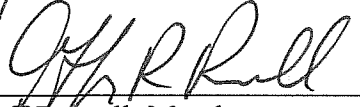
Kristie Dutton, Member



Carol Andrews, Member



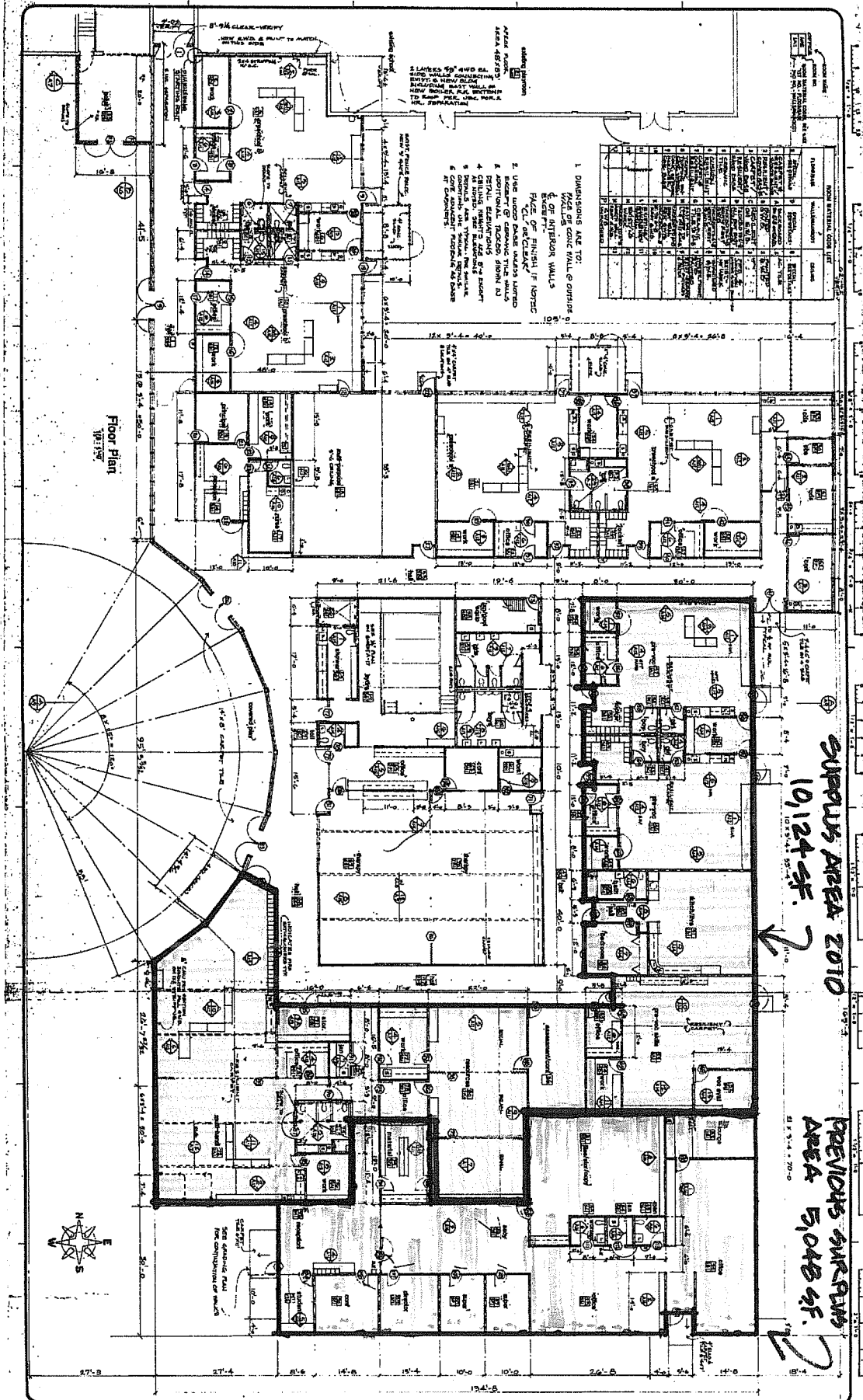
Jessica Olson, Member



Jeff Russell, Member

ATTESTED BY:


Gary D. Cohn
Secretary, Board of Directors



NO.	DESCRIPTION	QTY.	UNIT	PRICE	TOTAL
1	CEILING TILES	100	SQ. FT.	1.00	100.00
2	FLOOR TILES	200	SQ. FT.	2.00	400.00
3	WALL TILES	50	SQ. FT.	1.50	75.00
4	DOOR TILES	10	SQ. FT.	1.00	10.00
5	STAIR TILES	50	SQ. FT.	1.00	50.00
6	ENTRY TILES	100	SQ. FT.	1.00	100.00
7	RESTROOM TILES	50	SQ. FT.	1.00	50.00
8	CAFETERIA TILES	200	SQ. FT.	2.00	400.00
9	LIBRARY TILES	100	SQ. FT.	1.00	100.00
10	CLASSROOM TILES	100	SQ. FT.	1.00	100.00
11	OFFICE TILES	50	SQ. FT.	1.00	50.00
12	STORAGE TILES	50	SQ. FT.	1.00	50.00
13	ENTRY TILES	100	SQ. FT.	1.00	100.00
14	RESTROOM TILES	50	SQ. FT.	1.00	50.00
15	CAFETERIA TILES	200	SQ. FT.	2.00	400.00
16	LIBRARY TILES	100	SQ. FT.	1.00	100.00
17	CLASSROOM TILES	100	SQ. FT.	1.00	100.00
18	OFFICE TILES	50	SQ. FT.	1.00	50.00
19	STORAGE TILES	50	SQ. FT.	1.00	50.00
20	ENTRY TILES	100	SQ. FT.	1.00	100.00

1. DIMENSIONS ARE TO: FACE OF CONC. WALL & CURB OR FACE OF INTERIOR WALLS.
2. USE UNIFORM PLATE SIZES LISTED.
3. ADDITIONAL NOTES SHOWN IN 3.
4. CEILING HEIGHTS ARE 8' 0" EXCEPT WHERE NOTED.
5. CONCRETE FLOOR FINISHES ARE 4" THICK.
6. CEILING FINISHES ARE 4" THICK.

